

PRODUCT INFORMATION PACKET



Model No: LM22661
Catalog No: LM22661
1,1800,TEFC,56C,3/60/230/460
Speed Ratio Motors



Regal and Leeson are trademarks of Regal Rexnord Corporation or one of its affiliated companies.
©2021 Regal Rexnord Corporation, All Rights Reserved. MC017097E





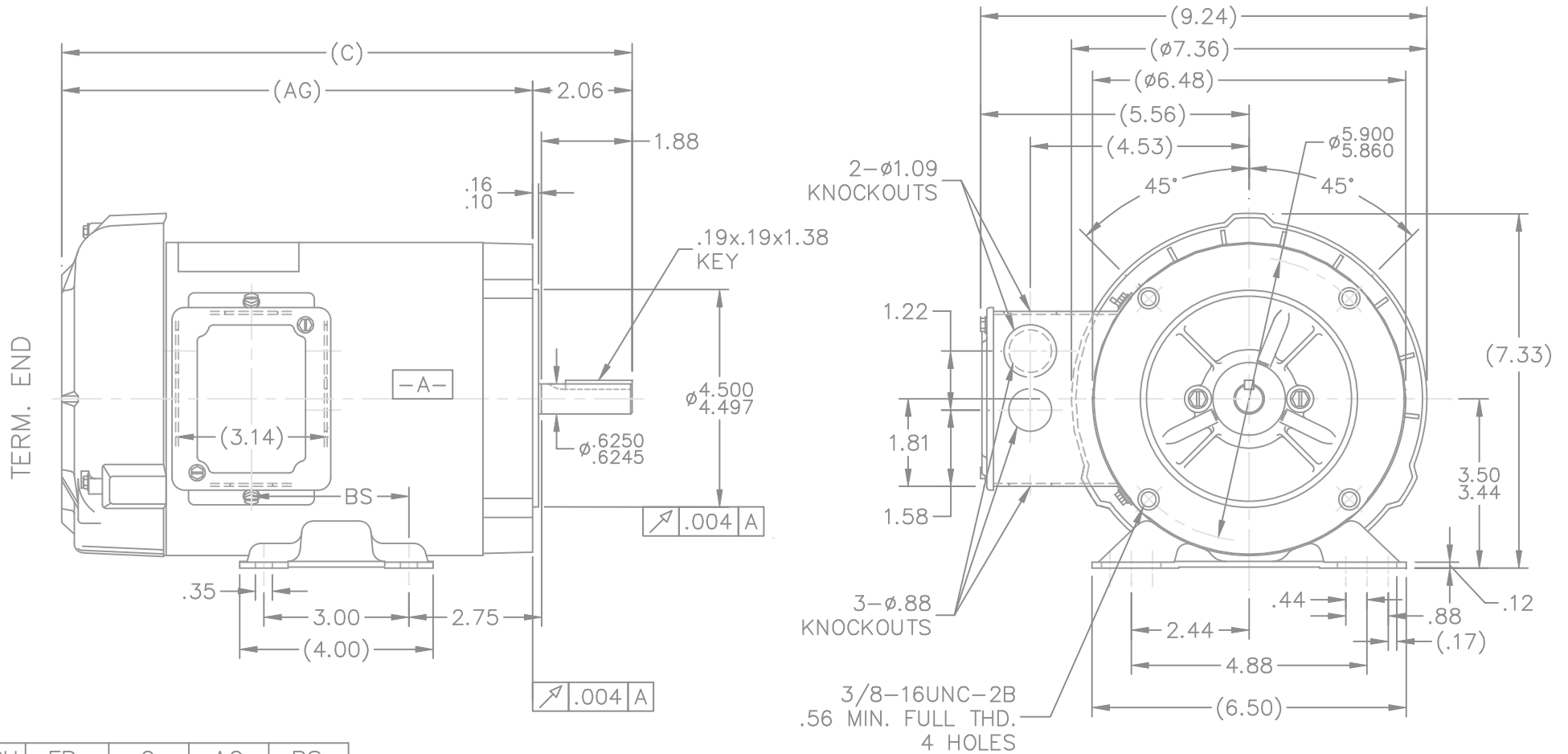
Nameplate Specifications

Output HP	1 Hp	Output KW	0.75 kW
Frequency	60 Hz	Voltage	230/460 V
Current	3.0/1.5 A	Speed	1725 rpm
Service Factor	1	Phase	3
Efficiency	82.5 %	Power Factor	74.5
Duty	Continuous	Insulation Class	F
Design Code	INV	KVA Code	M
Frame	56C	Enclosure	Totally Enclosed Fan Cooled
Thermal Protection	No	Ambient Temperature	40 °C
Drive End Bearing Size	203	Opp Drive End Bearing Size	203
UL	Recognized	CSA	Y
CE	N	IP Code	43
Number of Speeds	1		

Technical Specifications

Electrical Type	Squirrel Cage Inverter Duty	Starting Method	Inverter Only
Poles	4	Rotation	Reversible
Resistance Main	16.8 Ohms	Mounting	Rigid Base
Motor Orientation	Horizontal	Drive End Bearing	Ball
Opp Drive End Bearing	Ball	Frame Material	Rolled Steel
Shaft Type	NEMA 56	Overall Length	12.81 in
Frame Length	7.56 in	Shaft Diameter	0.625 in
Shaft Extension	1.88 in	Assembly/Box Mounting	F1 ONLY
Outline Drawing	100110LN-756	Connection Drawing	EE7308T-LN

This is an uncontrolled document once printed or downloaded and is subject to change without notice. Date Created:10/11/2021



DASH	FR.	C	AG	BS
606	56-60	11.31	9.25	2.75
656	56-65	11.81	9.75	3.25
706	56-70	12.31	10.25	3.75
756	56-75	12.81	10.75	4.25

06-01-2000

NOTES:

1. CONDUIT BOX CAN BE ROTATED 180°.
2. NAMEPLATE READ FROM CONDUIT BOX SIDE OF MOTOR.

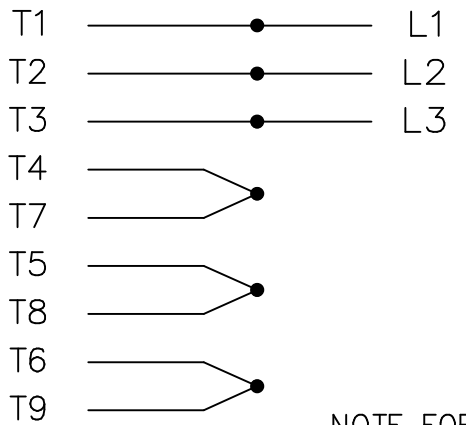


		TOLERANCES UNLESS SPECIFIED				DRAWN BLR 06-10-1999	
		DEC.	INCHES			CHK ML 06-18-1999	
		.X	±.1			APPD GK 06-18-1999	
		.XX	±.03	TITLE OUTLINE		SCALE 5=16	
2	ADDED NAMEPLATE LOC. CN27400-296	BLR	08-05-1999	.XXX	±.005	REF	
1	NEW DRAWING	BLR	06-18-1999	.XXXX	±.0005	FMF	
NO.	REVISION	BY & DATE	CHK	ANG	±'30"	FINISH	PREV
			RFP	06-18-1999		CAD FILE 100110ln	SIZE A
			DIST	WP		DRAWING NO. 100110LN	PAGE 1 OF 1
							REV. 2

THIS DRAWING IN DESIGN AND DETAIL IS OUR PROPERTY AND MUST NOT BE USED EXCEPT IN CONNECTION WITH OUR WORK ALL RIGHTS OF DESIGN AND INVENTION ARE RESERVED THIS IS AN ELECTRONICALLY GENERATED DOCUMENT - DO NOT SCALE THIS PRINT

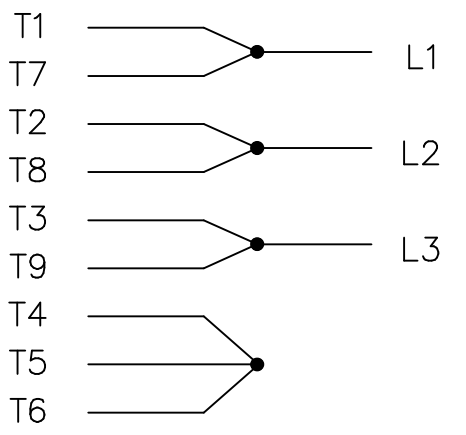
THREE PHASE
DUAL VOLTAGE MOTOR

HIGH VOLTAGE

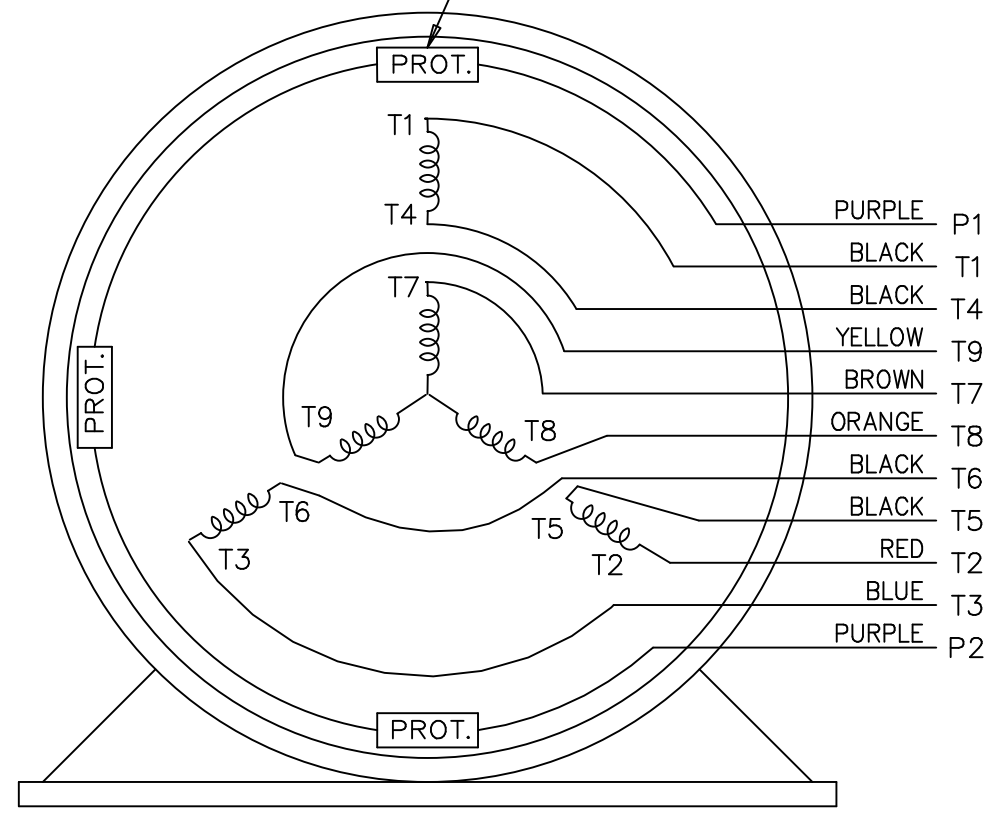


NOTE FOR FACTORY USE ONLY:
TO SURGE TEST FOR COMMON CONNECT:
HIGH VOLT: CONNECT P1 TO T1
THEN P2 TO L1
LOW VOLT: CONNECT P1 TO T1 & T7,
THEN P2 TO L1

LOW VOLTAGE



THREMO-PROTECTORS
CONNECTED IN SERIES.



VIEW OF TERMINAL END

				TOLERANCES UNLESS SPECIFIED			DRAWN BJK 07-16-2002						
				DEC.	INCHES		CHK DRS 07-18-2002						
				.X	±.1		APPD GK 07-18-2002						
					.XX	±.02	SCALE 1=1						
2	ADDED COLORS TO "T & P" LEADS	CN 40494	MSG 08-08-2006	ML	.XXX	±.005	TITLE CONNECTION DIAGRAM 3 PHASE - DUAL VOLTAGE MOTOR						
1	NEW DRAWING		BJK 07-18-2002	DRS	.XXXX	±.0005	MAT'L.						
NO.	REVISION		BY & DATE	CHK	ANG	±7'30"	FINISH						
THIS DRAWING IN DESIGN AND DETAIL IS OUR PROPERTY AND MUST NOT BE USED EXCEPT IN CONNECTION WITH OUR WORK ALL RIGHTS OF DESIGN AND INVENTION ARE RESERVED THIS IS AN ELECTRONICALLY GENERATED DOCUMENT - DO NOT SCALE THIS PRINT				RFP	CAD FILE ee7308t_ln			SIZE	DRAWING NO.	PAGE	OF	REV.	
				DIST	LB				A	EE7308T-LN			2



2100 WASHINGTON ST.
GRAFTON, WI
PH. 262-277-8810

CERTIFICATION DATA SHEET

CONN. DIAGRAM: A-EE7308T-LN

OUTLINE: A-100110LN-756

WINDING #: ZT4145 R2 3

CATALOG #: LM22661

MOUNTING: F1 ONLY

TYPICAL MOTOR PERFORMANCE DATA

HP	kW	SYNC. RPM	F.L. RPM	FRAME	ENCLOSURE	KVA CODE	DESIGN
1	0.75	1800	1725	56	TEFC	M	INV

PH	Hz	VOLTS	AMPS	START TYPE	DUTY	INSL	S.F.	AMB°C
3	60	230/460	3/1.5	INVERTER ONLY	CONTINUOUS	F3	1.0	40

FULL LOAD EFF:	82.5	3/4 LOAD EFF:	81.5	1/2 LOAD EFF:	78.5	GTD. EFF	ELEC. TYPE
FULL LOAD PF:	74.5	3/4 LOAD PF:	66	1/2 LOAD PF:	53	80	SQ CAGE INV DUTY

F.L. TORQUE	LOCKED ROTOR AMPS	L.R. TORQUE	B.D. TORQUE	F.L. RISE°C
3 LB-FT	26 / 13	9.8 LB-FT 327 %	13 LB-FT 433 %	38

SOUND PRESSURE @ 3 FT.	SOUND POWER	ROTOR WK^2	MAX. WK^2	SAFE STALL TIME	STARTS / HOUR	APPROX. MOTOR WGT
62 dBA	72 dBA	0.08 LB-FT^2	- LB-FT^2	- SEC.	-	31 LBS.

*** SUPPLEMENTAL INFORMATION ***

DE BRACKET TYPE	ODE BRACKET TYPE	MOUNT TYPE	ORIENTATION	SEVERE DUTY	HAZARDOUS LOCATION	DRIP COVER	SCREENS	PAINT
C-FACE	STANDARD HUBLESS	RIGID	HORIZONTAL	FALSE	NONE	FALSE	NONE	GRAY (POWDER)

BEARINGS		GREASE	SHAFT TYPE	SPECIAL DE	SPECIAL ODE	SHAFT MATERIAL	FRAME MATERIAL
DE	ODE	POLYREX EM	STANDARD 56	NONE	NONE	1144 STRESSPROOF (C-223)	ROLLED STEEL
BALL	BALL						
203	203						

THERMO-PROTECTORS				THERMISTORS	CONTROL	SPACE HEATERS
THERMOSTATS	PROTECTORS	WDG RTDs	BRG RTDs	NONE	FALSE	NONE VOLTS
TSTATS (N/C)	NOT	NONE	NONE			

*
N
O
T
E
S
*

INVERTER TORQUE: CONSTANT 4:1
INV. HP SPEED RANGE: NONE
ENCODER: NONE NONE NONE NONE NONE PPR
BRAKE: NONE NONE NONE P/N NONE NONE NONE NONE FT-LB NONE V NONE Hz

Data Sheet

Date: 1/19/2018

LM22661



Data @ 460 V

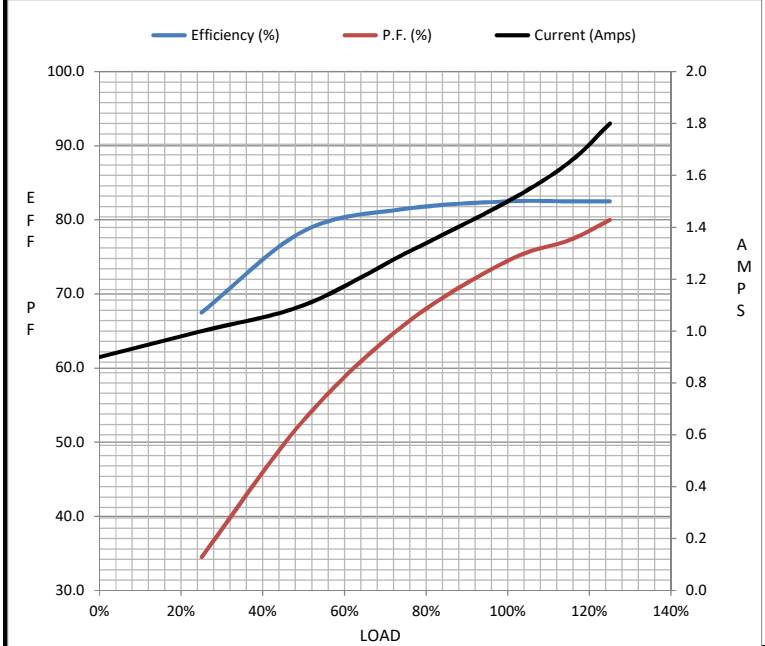
Motor Load Data

Load	0%	25%	50%	75%	100%	115%	125%	LR
Current (Amps)	0.90	1.00	1.10	1.30	1.50	1.65	1.80	13.0
Torque (ft-lb)	0.00	0.75	1.50	2.25	3.0	3.4	3.8	9.8
RPM	1800	1790	1780	1765	1755	1.749	1740	0
Efficiency (%)		67.5	78.5	81.5	82.5	82.5	82.5	
P.F. (%)	11.0	34.5	53.0	66.0	74.5	77.3	80.0	69.0

Motor Speed Data

	LR	Pull-Up	BD	Rated	Idle
Speed (RPM)	0	400	1250	1755	1800
Current (Amps)	13.0	11.5	8.8	1.50	0.90
Torque (ft-lb)	9.8	9.0	13.0	3.0	0.00

Information Block				
HP	1.0			
Sync. RPM	1800			
Frame	56			
Enclosure	TEFC			
Construction	TFR			
Voltage	230/460 V			
Frequency	60 Hz			
Design	B			
LR Code letter	M			
Service Factor	1.15			
Temp Rise @ FL	38 °C			
Duty	CONT			
Ambient	40 °C			
Elevation	1,000 feet			
Rotor/Shaft wk ²	0.08 Lb-Ft ²			
Ref Wdg	ZT4145 R2			
Sound Pressure @ 1M	62 dBA			
VFD Rating	CONSTANT 4:1			
Outline Dwg	A-100110LN-756			
Conn. Diag	A-EE7308T-LN			
Additional Specifications:				
0				
0				
EQUIV CKT (OHMS / PHASE)				
R1	R2	X1	X2	Xm
9.7130	6.4180	12.4390	11.1040	303.8800



Speed - Torque Curve

